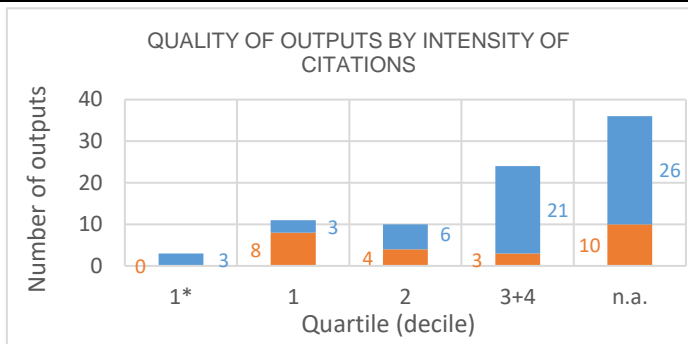
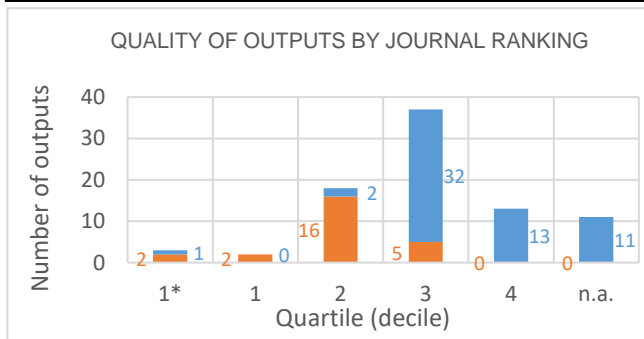


# Evaluation of the Research and Professional Activities of the Institutes of the Czech Academy of Sciences for 2015–2019

## BIBLIOMETRIC PARAMETERS OF ALL OUTPUTS INCLUDING THOSE EVALUATED IN THE PHASE I.

**Institute:** Institute of Physiology of the CAS, v. v. i.  
**Team:** Laboratory of Biomaterials and Tissue Engineering  
**Head:** doc. MUDr. Lucie Bačáková, CSc.  
**Field:** Medical biotechnology  
**Total number of outputs:** 84      **Evaluated outputs:** 25



### TYPES OF COLLABORATION

Collaboration	Outputs (evaluated)	Outputs (not evaluated)
A1		
B	6	17
B1	7	17
C	5	4
C1	3	5
D	2	9
D1	2	4
E		1
n.a.		2
Without affiliation		
A1+B1+C1+D1	12	26
B+C+D+E	13	31

### FIELD STRUCTURE OF OUTPUTS

Field structure of outputs	Outputs (evaluated)	Outputs (not evaluated)
Materials Science Biomaterials	6	17
Materials Science Multidisciplinary	3	14
Physics Applied	3	14
Nanoscience Nanotechnology	9	7
Engineering Biomedical	2	10
Physics Condensed Matter	1	9
Pharmacology Pharmacy	7	2
Materials Science Coatings Films	1	7
Chemistry Physical	1	5
Biotechnology Applied Microbiology	2	2
Cell Biology		3
Chemistry Multidisciplinary		3
Multidisciplinary Sciences	1	2
Physiology		3
Polymer Science	2	1
Anatomy Morphology		2
Cardiac Cardiovascular Systems		2
Cell Tissue Engineering		2
Chemistry Applied	2	
Chemistry Organic	2	

**Total number of outputs:** outputs of the team published during the evaluated period 2015-2019.

**Evaluated outputs:** selected outputs submitted by the team to the Phase I of evaluation.

**Outputs used for bibliometry:** subset of all outputs registered in the Web of Science; document type: article, review or proceedings paper.

**Quality of outputs by journal ranking:** number of outputs in top decile (1\*) and quartiles (1-4) by AIS of journals; n. a. - outputs in journals without AIS; orange: outputs from the Phase I, blue: the other outputs of the team.

**Quality of outputs by intensity of citations:** number of outputs in the top decile (1\*) and in quartiles (1, 2, 3+4) determined from the list of outputs ordered by the number of citations (downloaded from the Web of Science at the beginning of evaluation) for each subject category, year, and type of output; n. a. – the data are not robust enough for relevant judgement; orange: outputs from the Phase I, blue: the other outputs of the team.

**Types of collaboration:** outputs created exclusively in a particular institute are marked by A1, outputs created within national cooperation by max. 5 organizations are marked by B, outputs created within international cooperation by max. 5 organizations are marked C, outputs created within large collaboration exceeding 5 organizations are marked D, outputs created within large international collaboration are marked E. It is distinguished by marking B1/B, C1/C and D1/D whether the output has/does not have a corresponding author from a particular team.

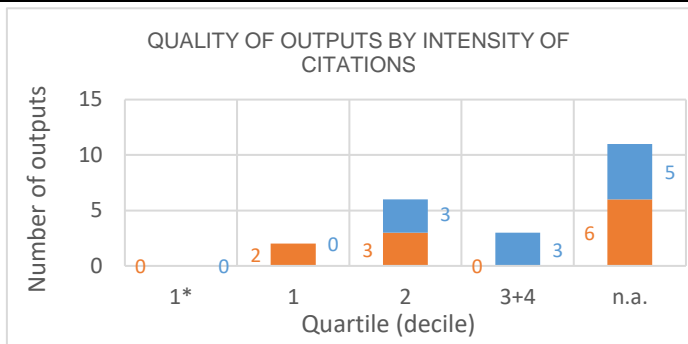
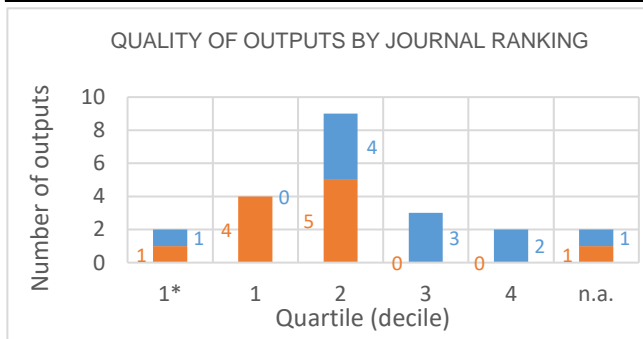
**Field structure of outputs:** number of outputs of the team in different subject categories (subfields); if the output is assigned to more than one field, the field where the publication performs best (assessed by Quality of outputs by journals ranking) is taken; the table shows up to 20 fields.

**Detailed explanation of the indicators is provided in the Methodology of evaluation, Annex 2 – Bibliometrics.**

# Evaluation of the Research and Professional Activities of the Institutes of the Czech Academy of Sciences for 2015–2019

## BIBLIOMETRIC PARAMETERS OF ALL OUTPUTS INCLUDING THOSE EVALUATED IN THE PHASE I.

**Institute:** Institute of Physiology of the CAS, v. v. i.  
**Team:** Laboratory of Structural Biology of Signaling Proteins  
**Head:** RNDr. Veronika Obšilová, PhD.  
**Field:** Biochemistry and molecular cell biology, biophysics, virology, ...  
**Total number of outputs:** 22      **Evaluated outputs:** 11



### TYPES OF COLLABORATION

Collaboration	Outputs (evaluated)	Outputs (not evaluated)
A1		
B		2
B1	6	4
C		1
C1	2	
D		1
D1	3	2
E		
n.a.		1
Without affiliation		
A1+B1+C1+D1	11	6
B+C+D+E		4

### FIELD STRUCTURE OF OUTPUTS

Field structure of outputs	Outputs (evaluated)	Outputs (not evaluated)
Biochemistry Molecular Biology	7	9
Biophysics	3	4
Cell Biology	2	1
Chemistry Medicinal	1	1
Chemistry Physical		2
Biology	1	
Multidisciplinary Sciences	1	
n.a.		1
Neurosciences	1	
Physiology		1

**Total number of outputs:** outputs of the team published during the evaluated period 2015-2019.

**Evaluated outputs:** selected outputs submitted by the team to the Phase I of evaluation.

**Outputs used for bibliometry:** subset of all outputs registered in the Web of Science; document type: article, review or proceedings paper.

**Quality of outputs by journal ranking:** number of outputs in top decile (1\*) and quartiles (1-4) by AIS of journals; n. a. - outputs in journals without AIS; orange: outputs from the Phase I, blue: the other outputs of the team.

**Quality of outputs by intensity of citations:** number of outputs in the top decile (1\*) and in quartiles (1, 2, 3+4) determined from the list of outputs ordered by the number of citations (downloaded from the Web of Science at the beginning of evaluation) for each subject category, year, and type of output; n. a. – the data are not robust enough for relevant judgement; orange: outputs from the Phase I, blue: the other outputs of the team.

**Types of collaboration:** outputs created exclusively in a particular institute are marked by A1, outputs created within national cooperation by max. 5 organizations are marked by B, outputs created within international cooperation by max. 5 organizations are marked C, outputs created within large collaboration exceeding 5 organizations are marked D, outputs created within large international collaboration are marked E. It is distinguished by marking B1/B, C1/C and D1/D whether the output has/does not have a corresponding author from a particular team.

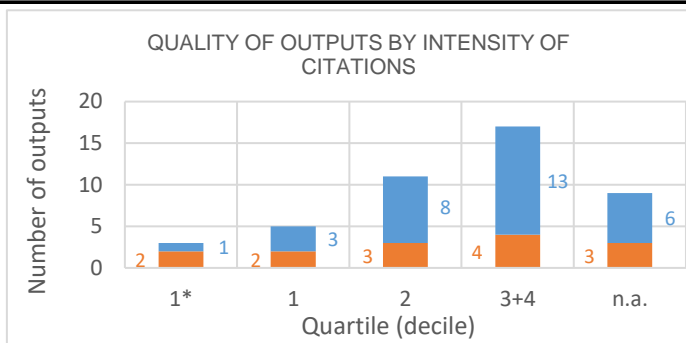
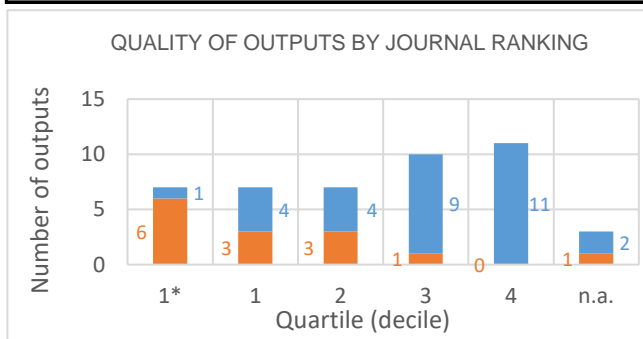
**Field structure of outputs:** number of outputs of the team in different subject categories (subfields); if the output is assigned to more than one field, the field where the publication performs best (assessed by Quality of outputs by journals ranking) is taken; the table shows up to 20 fields.

**Detailed explanation of the indicators is provided in the Methodology of evaluation, Annex 2 – Bibliometrics.**

# Evaluation of the Research and Professional Activities of the Institutes of the Czech Academy of Sciences for 2015–2019

## BIBLIOMETRIC PARAMETERS OF ALL OUTPUTS INCLUDING THOSE EVALUATED IN THE PHASE I.

**Institute:** Institute of Physiology of the CAS, v. v. i.  
**Team:** Laboratory of Bioenergetics  
**Head:** RNDr. Tomáš Mráček, Ph.D.  
**Field:** Biochemistry and molecular cell biology, biophysics, virology, ...  
**Total number of outputs:** 45      **Evaluated outputs:** 14



### TYPES OF COLLABORATION

Collaboration	Outputs (evaluated)	Outputs (not evaluated)
A1	2	6
B	1	5
B1		10
C	2	1
C1	2	3
D	5	4
D1	1	1
E		
n.a.	1	1
Without affiliation		
A1+B1+C1+D1	5	20
B+C+D+E	8	10

### FIELD STRUCTURE OF OUTPUTS

Field structure of outputs	Outputs (evaluated)	Outputs (not evaluated)
Cell Biology	4	7
Biochemistry Molecular Biology	5	5
Physiology		9
Biophysics	2	5
Genetics Heredity	3	2
Oncology	3	2
Endocrinology Metabolism		3
Medicine Research Experimental		3
Multidisciplinary Sciences	1	2
n.a.	1	1
Pharmacology Pharmacy		2
Biology		1
Cardiac Cardiovascular Systems	1	
Gastroenterology Hepatology		1
Hematology	1	
Immunology		1
Nutrition Dietetics		1
Sport Sciences		1
Toxicology		1

**Total number of outputs:** outputs of the team published during the evaluated period 2015-2019.

**Evaluated outputs:** selected outputs submitted by the team to the Phase I of evaluation.

**Outputs used for bibliometry:** subset of all outputs registered in the Web of Science; document type: article, review or proceedings paper.

**Quality of outputs by journal ranking:** number of outputs in top decile (1\*) and quartiles (1-4) by AIS of journals; n. a. - outputs in journals without AIS; orange: outputs from the Phase I, blue: the other outputs of the team.

**Quality of outputs by intensity of citations:** number of outputs in the top decile (1\*) and in quartiles (1, 2, 3+4) determined from the list of outputs ordered by the number of citations (downloaded from the Web of Science at the beginning of evaluation) for each subject category, year, and type of output; n. a. – the data are not robust enough for relevant judgement; orange: outputs from the Phase I, blue: the other outputs of the team.

**Types of collaboration:** outputs created exclusively in a particular institute are marked by A1, outputs created within national cooperation by max. 5 organizations are marked by B, outputs created within international cooperation by max. 5 organizations are marked C, outputs created within large collaboration exceeding 5 organizations are marked D, outputs created within large international collaboration are marked E. It is distinguished by marking B1/B, C1/C and D1/D whether the output has/does not have a corresponding author from a particular team.

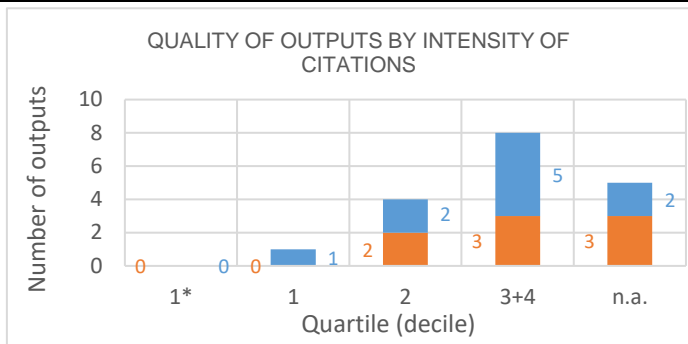
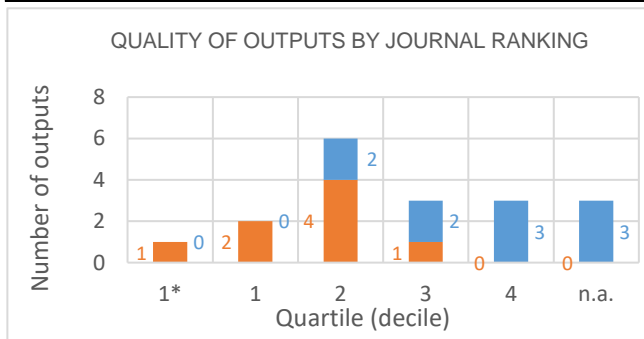
**Field structure of outputs:** number of outputs of the team in different subject categories (subfields); if the output is assigned to more than one field, the field where the publication performs best (assessed by Quality of outputs by journals ranking) is taken; the table shows up to 20 fields.

**Detailed explanation of the indicators is provided in the Methodology of evaluation, Annex 2 – Bibliometrics.**

# Evaluation of the Research and Professional Activities of the Institutes of the Czech Academy of Sciences for 2015–2019

## BIBLIOMETRIC PARAMETERS OF ALL OUTPUTS INCLUDING THOSE EVALUATED IN THE PHASE I.

**Institute:** Institute of Physiology of the CAS, v. v. i.  
**Team:** Laboratory of Neurochemistry  
**Head:** Mgr. Jan Jakubík, Ph.D.  
**Field:** Basic medicine  
**Total number of outputs:** 18      **Evaluated outputs:** 8



### TYPES OF COLLABORATION

Collaboration	Outputs (evaluated)	Outputs (not evaluated)
A1		
B		
B1		1
C	1	2
C1	7	5
D		2
D1		
E		
n.a.		
Without affiliation		
A1+B1+C1+D1	7	6
B+C+D+E	1	4

### FIELD STRUCTURE OF OUTPUTS

Field structure of outputs	Outputs (evaluated)	Outputs (not evaluated)
Neurosciences	3	5
Biochemistry Molecular Biology	2	3
Multidisciplinary Sciences	2	3
Pharmacology Pharmacy	3	
Physiology		3
Biophysics		1
Clinical Neurology	1	
Computer Science Interdisciplinary A		1
Geriatrics Gerontology		1
Chemistry Medicinal		1
Chemistry Multidisciplinary		1

**Total number of outputs:** outputs of the team published during the evaluated period 2015-2019.

**Evaluated outputs:** selected outputs submitted by the team to the Phase I of evaluation.

**Outputs used for bibliometry:** subset of all outputs registered in the Web of Science; document type: article, review or proceedings paper.

**Quality of outputs by journal ranking:** number of outputs in top decile (1\*) and quartiles (1-4) by AIS of journals; n. a. - outputs in journals without AIS; orange: outputs from the Phase I, blue: the other outputs of the team.

**Quality of outputs by intensity of citations:** number of outputs in the top decile (1\*) and in quartiles (1, 2, 3+4) determined from the list of outputs ordered by the number of citations (downloaded from the Web of Science at the beginning of evaluation) for each subject category, year, and type of output; n. a. – the data are not robust enough for relevant judgement; orange: outputs from the Phase I, blue: the other outputs of the team.

**Types of collaboration:** outputs created exclusively in a particular institute are marked by A1, outputs created within national cooperation by max. 5 organizations are marked by B, outputs created within international cooperation by max. 5 organizations are marked C, outputs created within large collaboration exceeding 5 organizations are marked D, outputs created within large international collaboration are marked E. It is distinguished by marking B1/B, C1/C and D1/D whether the output has/does not have a corresponding author from a particular team.

**Field structure of outputs:** number of outputs of the team in different subject categories (subfields); if the output is assigned to more than one field, the field where the publication performs best (assessed by Quality of outputs by journals ranking) is taken; the table shows up to 20 fields.

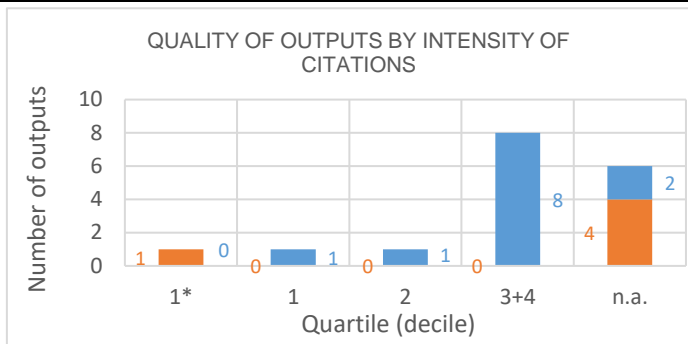
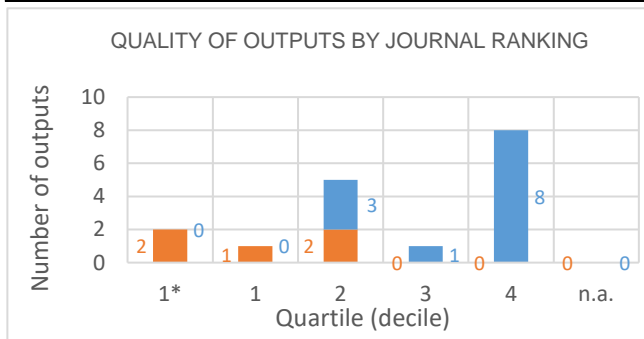
**Detailed explanation of the indicators is provided in the Methodology of evaluation, Annex 2 – Bibliometrics.**



# Evaluation of the Research and Professional Activities of the Institutes of the Czech Academy of Sciences for 2015–2019

## BIBLIOMETRIC PARAMETERS OF ALL OUTPUTS INCLUDING THOSE EVALUATED IN THE PHASE I.

**Institute:** Institute of Physiology of the CAS, v. v. i.  
**Team:** Laboratory of Pain Research  
**Head:** MUDr. Jiří Paleček, CSc.  
**Field:** Basic medicine  
**Total number of outputs:** 17      **Evaluated outputs:** 5



### TYPES OF COLLABORATION

Collaboration	Outputs (evaluated)	Outputs (not evaluated)
A1	1	3
B		
B1	1	2
C	1	3
C1	1	2
D	1	2
D1		
E		
n.a.		
Without affiliation		
A1+B1+C1+D1	3	7
B+C+D+E	2	5

### FIELD STRUCTURE OF OUTPUTS

Field structure of outputs	Outputs (evaluated)	Outputs (not evaluated)
Physiology		6
Neurosciences	2	2
Pharmacology Pharmacy	3	
Biochemistry Molecular Biology		2
Cell Biology		2
Medicine Research Experimental	2	
Microscopy		2
Anesthesiology		1
Clinical Neurology		1
Genetics Heredity	1	
Chemistry Multidisciplinary		1
Multidisciplinary Sciences		1

**Total number of outputs:** outputs of the team published during the evaluated period 2015-2019.

**Evaluated outputs:** selected outputs submitted by the team to the Phase I of evaluation.

**Outputs used for bibliometry:** subset of all outputs registered in the Web of Science; document type: article, review or proceedings paper.

**Quality of outputs by journal ranking:** number of outputs in top decile (1\*) and quartiles (1-4) by AIS of journals; n. a. - outputs in journals without AIS; orange: outputs from the Phase I, blue: the other outputs of the team.

**Quality of outputs by intensity of citations:** number of outputs in the top decile (1\*) and in quartiles (1, 2, 3+4) determined from the list of outputs ordered by the number of citations (downloaded from the Web of Science at the beginning of evaluation) for each subject category, year, and type of output; n. a. – the data are not robust enough for relevant judgement; orange: outputs from the Phase I, blue: the other outputs of the team.

**Types of collaboration:** outputs created exclusively in a particular institute are marked by A1, outputs created within national cooperation by max. 5 organizations are marked by B, outputs created within international cooperation by max. 5 organizations are marked C, outputs created within large collaboration exceeding 5 organizations are marked D, outputs created within large international collaboration are marked E. It is distinguished by marking B1/B, C1/C and D1/D whether the output has/does not have a corresponding author from a particular team.

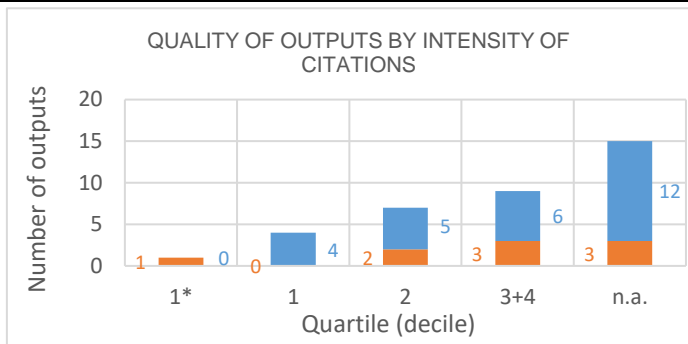
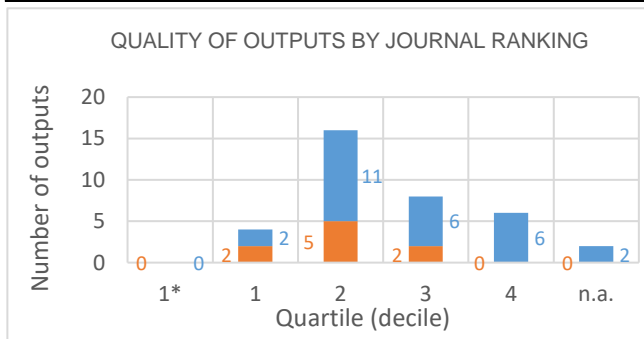
**Field structure of outputs:** number of outputs of the team in different subject categories (subfields); if the output is assigned to more than one field, the field where the publication performs best (assessed by Quality of outputs by journals ranking) is taken; the table shows up to 20 fields.

**Detailed explanation of the indicators is provided in the Methodology of evaluation, Annex 2 – Bibliometrics.**

# Evaluation of the Research and Professional Activities of the Institutes of the Czech Academy of Sciences for 2015–2019

## BIBLIOMETRIC PARAMETERS OF ALL OUTPUTS INCLUDING THOSE EVALUATED IN THE PHASE I.

**Institute:** Institute of Physiology of the CAS, v. v. i.  
**Team:** Laboratory of Membrane Transport  
**Head:** RNDr. Hana Sychrová, DrSc.  
**Field:** Biochemistry and molecular cell biology, biophysics, virology, ...  
**Total number of outputs:** 36      **Evaluated outputs:** 9



### TYPES OF COLLABORATION

Collaboration	Outputs (evaluated)	Outputs (not evaluated)
A1	3	9
B		
B1		3
C	1	11
C1	4	4
D		
D1	1	
E		
n.a.		
Without affiliation		
A1+B1+C1+D1	8	16
B+C+D+E	1	11

### FIELD STRUCTURE OF OUTPUTS

Field structure of outputs	Outputs (evaluated)	Outputs (not evaluated)
Microbiology	2	17
Biotechnology Applied Microbiology		17
Biochemistry Molecular Biology	5	7
Mycology		8
Cell Biology	2	2
Multidisciplinary Sciences	3	
Biophysics	2	
Food Science Technology		2
Biology		1
Genetics Heredity		1
Immunology		1
Pharmacology Pharmacy		1
Plant Sciences		1

**Total number of outputs:** outputs of the team published during the evaluated period 2015-2019.

**Evaluated outputs:** selected outputs submitted by the team to the Phase I of evaluation.

**Outputs used for bibliometry:** subset of all outputs registered in the Web of Science; document type: article, review or proceedings paper.

**Quality of outputs by journal ranking:** number of outputs in top decile (1\*) and quartiles (1-4) by AIS of journals; n. a. - outputs in journals without AIS; orange: outputs from the Phase I, blue: the other outputs of the team.

**Quality of outputs by intensity of citations:** number of outputs in the top decile (1\*) and in quartiles (1, 2, 3+4) determined from the list of outputs ordered by the number of citations (downloaded from the Web of Science at the beginning of evaluation) for each subject category, year, and type of output; n. a. – the data are not robust enough for relevant judgement; orange: outputs from the Phase I, blue: the other outputs of the team.

**Types of collaboration:** outputs created exclusively in a particular institute are marked by A1, outputs created within national cooperation by max. 5 organizations are marked by B, outputs created within international cooperation by max. 5 organizations are marked C, outputs created within large collaboration exceeding 5 organizations are marked D, outputs created within large international collaboration are marked E. It is distinguished by marking B1/B, C1/C and D1/D whether the output has/does not have a corresponding author from a particular team.

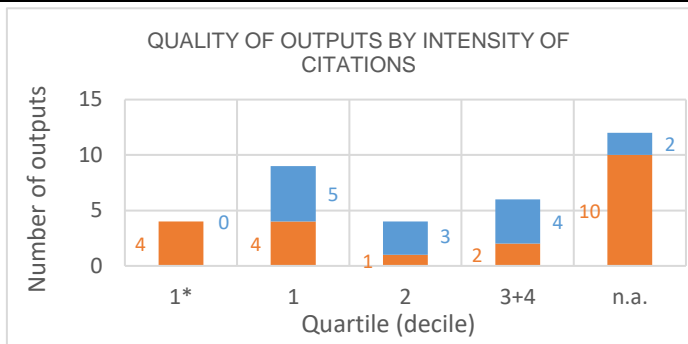
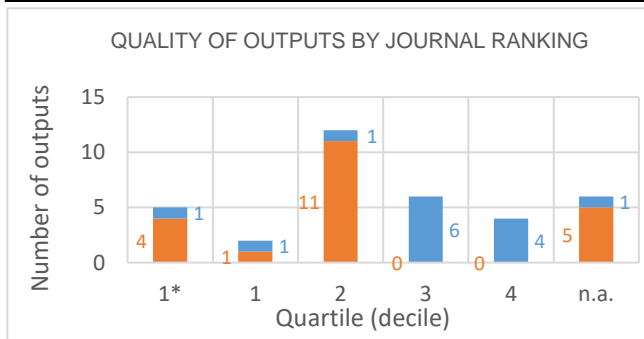
**Field structure of outputs:** number of outputs of the team in different subject categories (subfields); if the output is assigned to more than one field, the field where the publication performs best (assessed by Quality of outputs by journals ranking) is taken; the table shows up to 20 fields.

**Detailed explanation of the indicators is provided in the Methodology of evaluation, Annex 2 – Bibliometrics.**

# Evaluation of the Research and Professional Activities of the Institutes of the Czech Academy of Sciences for 2015–2019

## BIBLIOMETRIC PARAMETERS OF ALL OUTPUTS INCLUDING THOSE EVALUATED IN THE PHASE I.

**Institute:** Institute of Physiology of the CAS, v. v. i.  
**Team:** Laboratory of Adipose Tissue Biology  
**Head:** MUDr. Martin Rossmeisl, Ph.D.  
**Field:** Basic medicine  
**Total number of outputs:** 35      **Evaluated outputs:** 21



### TYPES OF COLLABORATION

Collaboration	Outputs (evaluated)	Outputs (not evaluated)
A1	3	2
B		
B1	3	9
C	5	2
C1	3	
D	1	
D1	1	1
E		
n.a.	5	
Without affiliation		
A1+B1+C1+D1	10	12
B+C+D+E	6	2

### FIELD STRUCTURE OF OUTPUTS

Field structure of outputs	Outputs (evaluated)	Outputs (not evaluated)
Biochemistry Molecular Biology	10	5
Biophysics	3	3
Cell Biology	5	
n.a.	5	
Multidisciplinary Sciences	1	3
Physiology		4
Endocrinology Metabolism	2	1
Nutrition Dietetics	3	
Chemistry Analytical	1	1
Medicine Research Experimental	2	
Biochemical Research Methods	1	
Biology	1	
Chemistry Medicinal	1	
Chemistry Multidisciplinary	1	

**Total number of outputs:** outputs of the team published during the evaluated period 2015-2019.

**Evaluated outputs:** selected outputs submitted by the team to the Phase I of evaluation.

**Outputs used for bibliometry:** subset of all outputs registered in the Web of Science; document type: article, review or proceedings paper.

**Quality of outputs by journal ranking:** number of outputs in top decile (1\*) and quartiles (1-4) by AIS of journals; n. a. - outputs in journals without AIS; orange: outputs from the Phase I, blue: the other outputs of the team.

**Quality of outputs by intensity of citations:** number of outputs in the top decile (1\*) and in quartiles (1, 2, 3+4) determined from the list of outputs ordered by the number of citations (downloaded from the Web of Science at the beginning of evaluation) for each subject category, year, and type of output; n. a. – the data are not robust enough for relevant judgement; orange: outputs from the Phase I, blue: the other outputs of the team.

**Types of collaboration:** outputs created exclusively in a particular institute are marked by A1, outputs created within national cooperation by max. 5 organizations are marked by B, outputs created within international cooperation by max. 5 organizations are marked C, outputs created within large collaboration exceeding 5 organizations are marked D, outputs created within large international collaboration are marked E. It is distinguished by marking B1/B, C1/C and D1/D whether the output has/does not have a corresponding author from a particular team.

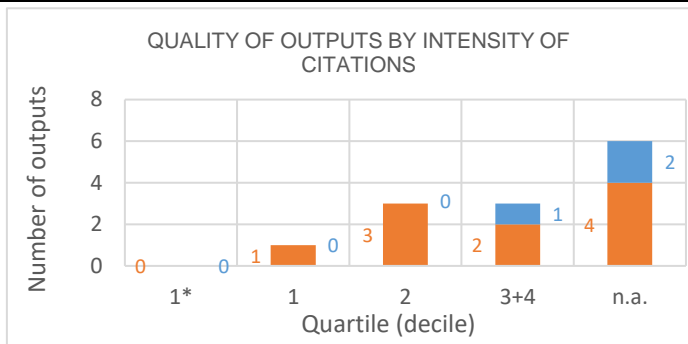
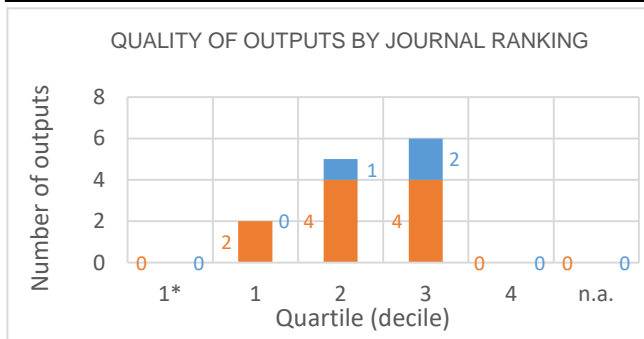
**Field structure of outputs:** number of outputs of the team in different subject categories (subfields); if the output is assigned to more than one field, the field where the publication performs best (assessed by Quality of outputs by journals ranking) is taken; the table shows up to 20 fields.

**Detailed explanation of the indicators is provided in the Methodology of evaluation, Annex 2 – Bibliometrics.**

# Evaluation of the Research and Professional Activities of the Institutes of the Czech Academy of Sciences for 2015–2019

## BIBLIOMETRIC PARAMETERS OF ALL OUTPUTS INCLUDING THOSE EVALUATED IN THE PHASE I.

**Institute:** Institute of Physiology of the CAS, v. v. i.  
**Team:** Laboratory of Epithelial Physiology  
**Head:** prof. RNDr. Jiří Pácha, DrSc.  
**Field:** Basic medicine  
**Total number of outputs:** 13      **Evaluated outputs:** 10



### TYPES OF COLLABORATION

Collaboration	Outputs (evaluated)	Outputs (not evaluated)
A1		
B	3	
B1	7	3
C		
C1		
D		
D1		
E		
n.a.		
Without affiliation		
A1+B1+C1+D1	7	3
B+C+D+E	3	

### FIELD STRUCTURE OF OUTPUTS

Field structure of outputs	Outputs (evaluated)	Outputs (not evaluated)
Endocrinology Metabolism	3	1
Neurosciences	3	1
Biochemistry Molecular Biology	1	1
Biology	2	
Immunology	2	
Peripheral Vascular Disease	2	
Physiology	2	
Psychiatry	2	
Behavioral Sciences		1
Dentistry Oral Surgery Medicine		1
Toxicology		1
Zoology		1

**Total number of outputs:** outputs of the team published during the evaluated period 2015-2019.

**Evaluated outputs:** selected outputs submitted by the team to the Phase I of evaluation.

**Outputs used for bibliometry:** subset of all outputs registered in the Web of Science; document type: article, review or proceedings paper.

**Quality of outputs by journal ranking:** number of outputs in top decile (1\*) and quartiles (1-4) by AIS of journals; n. a. - outputs in journals without AIS; orange: outputs from the Phase I, blue: the other outputs of the team.

**Quality of outputs by intensity of citations:** number of outputs in the top decile (1\*) and in quartiles (1, 2, 3+4) determined from the list of outputs ordered by the number of citations (downloaded from the Web of Science at the beginning of evaluation) for each subject category, year, and type of output; n. a. – the data are not robust enough for relevant judgement; orange: outputs from the Phase I, blue: the other outputs of the team.

**Types of collaboration:** outputs created exclusively in a particular institute are marked by A1, outputs created within national cooperation by max. 5 organizations are marked by B, outputs created within international cooperation by max. 5 organizations are marked C, outputs created within large collaboration exceeding 5 organizations are marked D, outputs created within large international collaboration are marked E. It is distinguished by marking B1/B, C1/C and D1/D whether the output has/does not have a corresponding author from a particular team.

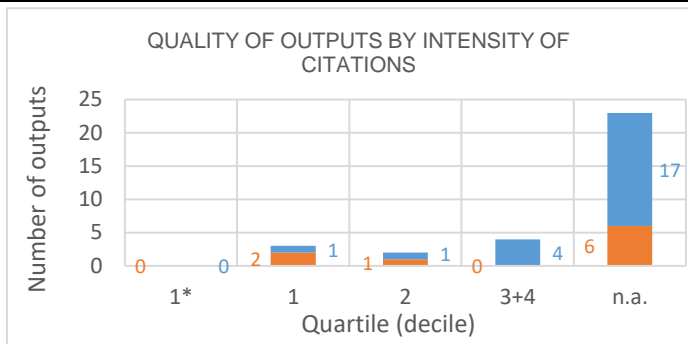
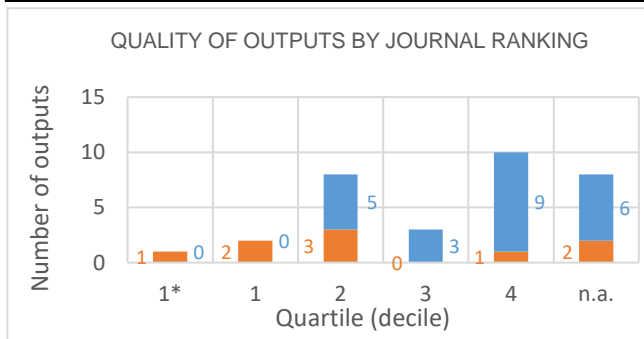
**Field structure of outputs:** number of outputs of the team in different subject categories (subfields); if the output is assigned to more than one field, the field where the publication performs best (assessed by Quality of outputs by journals ranking) is taken; the table shows up to 20 fields.

**Detailed explanation of the indicators is provided in the Methodology of evaluation, Annex 2 – Bibliometrics.**

# Evaluation of the Research and Professional Activities of the Institutes of the Czech Academy of Sciences for 2015–2019

## BIBLIOMETRIC PARAMETERS OF ALL OUTPUTS INCLUDING THOSE EVALUATED IN THE PHASE I.

**Institute:** Institute of Physiology of the CAS, v. v. i.  
**Team:** Laboratory of Translational Metabolism  
**Head:** doc. Ing. Tomáš Čajka, PhD.  
**Field:** Health sciences  
**Total number of outputs:** 32      **Evaluated outputs:** 9



### TYPES OF COLLABORATION

Collaboration	Outputs (evaluated)	Outputs (not evaluated)
A1		3
B	1	3
B1	3	5
C		3
C1		4
D	2	3
D1	1	
E		
n.a.	2	2
Without affiliation		
A1+B1+C1+D1	4	12
B+C+D+E	3	9

### FIELD STRUCTURE OF OUTPUTS

Field structure of outputs	Outputs (evaluated)	Outputs (not evaluated)
Chemistry Analytical	3	4
Biochemistry Molecular Biology		5
n.a.	2	2
Biochemical Research Methods	2	1
Cell Biology	1	2
Biology		2
Physiology		2
Agriculture Multidisciplinary		1
Anatomy Morphology		1
Biophysics		1
Biotechnology Applied Microbiology		1
Cardiac Cardiovascular Systems		1
Dentistry Oral Surgery Medicine		1
Developmental Biology		1
Ecology	1	
Endocrinology Metabolism		1
Chemistry Applied		1
Chemistry Medicinal		1
Microbiology		1
Oncology		1

**Total number of outputs:** outputs of the team published during the evaluated period 2015-2019.

**Evaluated outputs:** selected outputs submitted by the team to the Phase I of evaluation.

**Outputs used for bibliometry:** subset of all outputs registered in the Web of Science; document type: article, review or proceedings paper.

**Quality of outputs by journal ranking:** number of outputs in top decile (1\*) and quartiles (1-4) by AIS of journals; n. a. - outputs in journals without AIS; orange: outputs from the Phase I, blue: the other outputs of the team.

**Quality of outputs by intensity of citations:** number of outputs in the top decile (1\*) and in quartiles (1, 2, 3+4) determined from the list of outputs ordered by the number of citations (downloaded from the Web of Science at the beginning of evaluation) for each subject category, year, and type of output; n. a. – the data are not robust enough for relevant judgement; orange: outputs from the Phase I, blue: the other outputs of the team.

**Types of collaboration:** outputs created exclusively in a particular institute are marked by A1, outputs created within national cooperation by max. 5 organizations are marked by B, outputs created within international cooperation by max. 5 organizations are marked C, outputs created within large collaboration exceeding 5 organizations are marked D, outputs created within large international collaboration are marked E. It is distinguished by marking B1/B, C1/C and D1/D whether the output has/does not have a corresponding author from a particular team.

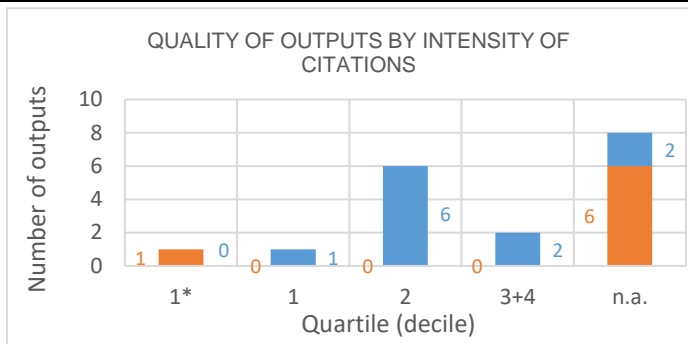
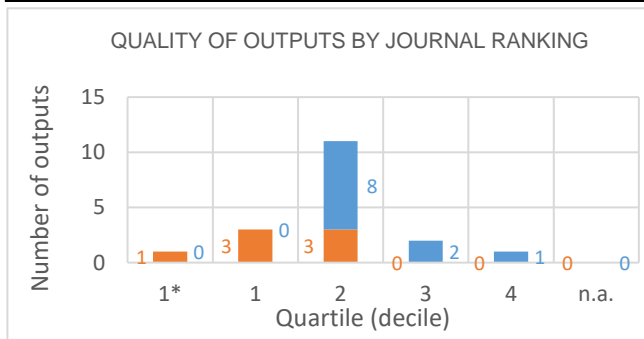
**Field structure of outputs:** number of outputs of the team in different subject categories (subfields); if the output is assigned to more than one field, the field where the publication performs best (assessed by Quality of outputs by journals ranking) is taken; the table shows up to 20 fields.

**Detailed explanation of the indicators is provided in the Methodology of evaluation, Annex 2 – Bibliometrics.**

# Evaluation of the Research and Professional Activities of the Institutes of the Czech Academy of Sciences for 2015–2019

## BIBLIOMETRIC PARAMETERS OF ALL OUTPUTS INCLUDING THOSE EVALUATED IN THE PHASE I.

**Institute:** Institute of Physiology of the CAS, v. v. i.  
**Team:** Laboratory of Biological Rhythms  
**Head:** doc. PharmDr. Alena Sumová, DSc.  
**Field:** Basic medicine  
**Total number of outputs:** 18      **Evaluated outputs:** 7



### TYPES OF COLLABORATION

Collaboration	Outputs (evaluated)	Outputs (not evaluated)
A1	2	5
B	1	1
B1	4	4
C		1
C1		
D		
D1		
E		
n.a.		
Without affiliation		
A1+B1+C1+D1	6	9
B+C+D+E	1	2

### FIELD STRUCTURE OF OUTPUTS

Field structure of outputs	Outputs (evaluated)	Outputs (not evaluated)
Physiology	3	6
Biology	1	5
Neurosciences	3	2
Multidisciplinary Sciences	1	2
Clinical Neurology	1	1
Behavioral Sciences		1
Biochemistry Molecular Biology	1	
Biophysics	1	
Cell Biology	1	
Developmental Biology		1
Endocrinology Metabolism		1
Geriatrics Gerontology	1	
Psychiatry	1	

**Total number of outputs:** outputs of the team published during the evaluated period 2015-2019.

**Evaluated outputs:** selected outputs submitted by the team to the Phase I of evaluation.

**Outputs used for bibliometry:** subset of all outputs registered in the Web of Science; document type: article, review or proceedings paper.

**Quality of outputs by journal ranking:** number of outputs in top decile (1\*) and quartiles (1-4) by AIS of journals; n. a. - outputs in journals without AIS; orange: outputs from the Phase I, blue: the other outputs of the team.

**Quality of outputs by intensity of citations:** number of outputs in the top decile (1\*) and in quartiles (1, 2, 3+4) determined from the list of outputs ordered by the number of citations (downloaded from the Web of Science at the beginning of evaluation) for each subject category, year, and type of output; n. a. – the data are not robust enough for relevant judgement; orange: outputs from the Phase I, blue: the other outputs of the team.

**Types of collaboration:** outputs created exclusively in a particular institute are marked by A1, outputs created within national cooperation by max. 5 organizations are marked by B, outputs created within international cooperation by max. 5 organizations are marked C, outputs created within large collaboration exceeding 5 organizations are marked D, outputs created within large international collaboration are marked E. It is distinguished by marking B1/B, C1/C and D1/D whether the output has/does not have a corresponding author from a particular team.

**Field structure of outputs:** number of outputs of the team in different subject categories (subfields); if the output is assigned to more than one field, the field where the publication performs best (assessed by Quality of outputs by journals ranking) is taken; the table shows up to 20 fields.

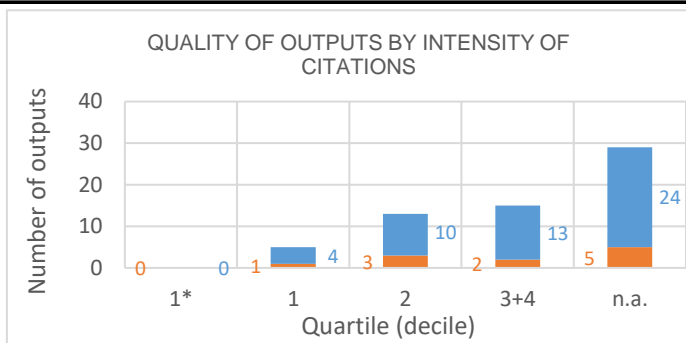
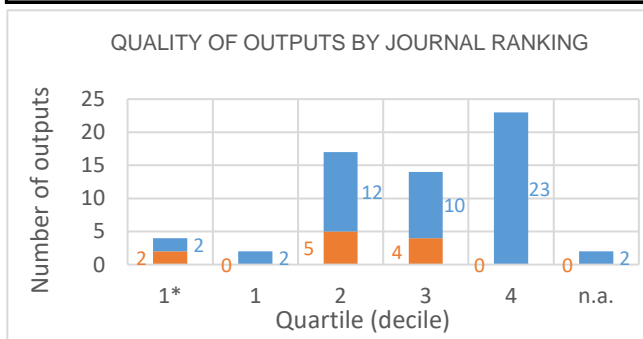
**Detailed explanation of the indicators is provided in the Methodology of evaluation, Annex 2 – Bibliometrics.**



# Evaluation of the Research and Professional Activities of the Institutes of the Czech Academy of Sciences for 2015–2019

## BIBLIOMETRIC PARAMETERS OF ALL OUTPUTS INCLUDING THOSE EVALUATED IN THE PHASE I.

**Institute:** Institute of Physiology of the CAS, v. v. i.  
**Team:** Laboratory of Experimental Hypertension  
**Head:** RNDr. Ivana Vaněčková, DSc.  
**Field:** Basic medicine  
**Total number of outputs:** 62      **Evaluated outputs:** 11



### TYPES OF COLLABORATION

Collaboration	Outputs (evaluated)	Outputs (not evaluated)
A1	1	7
B	1	8
B1	6	14
C		5
C1	1	3
D	2	12
D1		
E		
n.a.		2
Without affiliation		
A1+B1+C1+D1	8	24
B+C+D+E	3	25

### FIELD STRUCTURE OF OUTPUTS

Field structure of outputs	Outputs (evaluated)	Outputs (not evaluated)
Physiology	1	19
Endocrinology Metabolism	4	7
Pharmacology Pharmacy	1	7
Neurosciences		7
Peripheral Vascular Disease	5	2
Biochemistry Molecular Biology		6
Cell Biology	1	4
Medicine Research Experimental	1	3
Biotechnology Applied Microbiology		3
Biochemical Research Methods		2
Clinical Neurology		2
Chemistry Multidisciplinary		2
n.a.		2
Nutrition Dietetics	1	1
Critical Care Medicine		1
Chemistry Analytical		1
Microbiology		1
Multidisciplinary Sciences		1
Psychiatry		1

**Total number of outputs:** outputs of the team published during the evaluated period 2015-2019.

**Evaluated outputs:** selected outputs submitted by the team to the Phase I of evaluation.

**Outputs used for bibliometry:** subset of all outputs registered in the Web of Science; document type: article, review or proceedings paper.

**Quality of outputs by journal ranking:** number of outputs in top decile (1\*) and quartiles (1-4) by AIS of journals; n. a. - outputs in journals without AIS; orange: outputs from the Phase I, blue: the other outputs of the team.

**Quality of outputs by intensity of citations:** number of outputs in the top decile (1\*) and in quartiles (1, 2, 3+4) determined from the list of outputs ordered by the number of citations (downloaded from the Web of Science at the beginning of evaluation) for each subject category, year, and type of output; n. a. – the data are not robust enough for relevant judgement; orange: outputs from the Phase I, blue: the other outputs of the team.

**Types of collaboration:** outputs created exclusively in a particular institute are marked by A1, outputs created within national cooperation by max. 5 organizations are marked by B, outputs created within international cooperation by max. 5 organizations are marked C, outputs created within large collaboration exceeding 5 organizations are marked D, outputs created within large international collaboration are marked E. It is distinguished by marking B1/B, C1/C and D1/D whether the output has/does not have a corresponding author from a particular team.

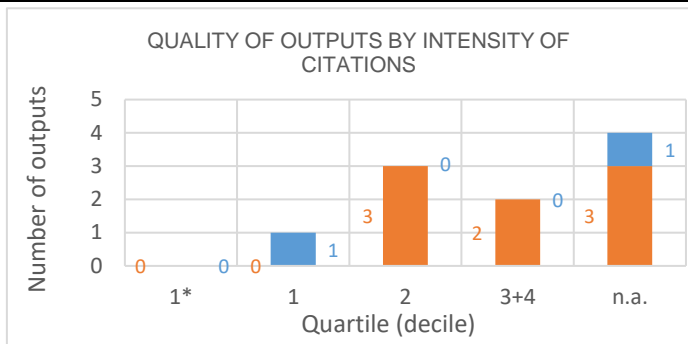
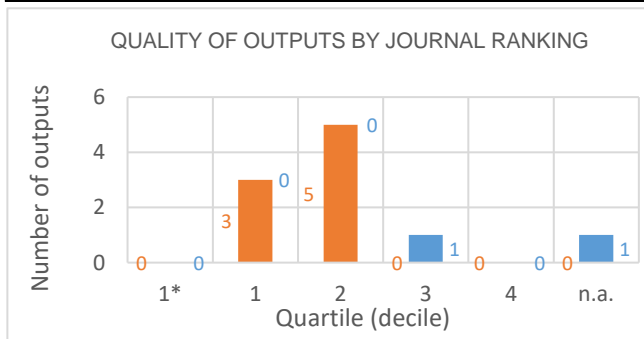
**Field structure of outputs:** number of outputs of the team in different subject categories (subfields); if the output is assigned to more than one field, the field where the publication performs best (assessed by Quality of outputs by journals ranking) is taken; the table shows up to 20 fields.

**Detailed explanation of the indicators is provided in the Methodology of evaluation, Annex 2 – Bibliometrics.**

# Evaluation of the Research and Professional Activities of the Institutes of the Czech Academy of Sciences for 2015–2019

## BIBLIOMETRIC PARAMETERS OF ALL OUTPUTS INCLUDING THOSE EVALUATED IN THE PHASE I.

**Institute:** Institute of Physiology of the CAS, v. v. i.  
**Team:** Laboratory of Cellular and Molecular Neuroendocrinology  
**Head:** RNDr. Hana Zemková, CSc.  
**Field:** Basic medicine  
**Total number of outputs:** 10      **Evaluated outputs:** 8



### TYPES OF COLLABORATION

Collaboration	Outputs (evaluated)	Outputs (not evaluated)
A1	1	
B		
B1	3	
C	3	1
C1	1	1
D		
D1		
E		
n.a.		
Without affiliation		
A1+B1+C1+D1	5	1
B+C+D+E	3	1

### FIELD STRUCTURE OF OUTPUTS

Field structure of outputs	Outputs (evaluated)	Outputs (not evaluated)
Neurosciences	4	
Endocrinology Metabolism	1	2
Biochemistry Molecular Biology	2	
Physiology	2	
Biochemical Research Methods	1	
Cell Biology		1
Mathematical Computational Biology	1	
Pharmacology Pharmacy	1	

**Total number of outputs:** outputs of the team published during the evaluated period 2015-2019.

**Evaluated outputs:** selected outputs submitted by the team to the Phase I of evaluation.

**Outputs used for bibliometry:** subset of all outputs registered in the Web of Science; document type: article, review or proceedings paper.

**Quality of outputs by journal ranking:** number of outputs in top decile (1\*) and quartiles (1-4) by AIS of journals; n. a. - outputs in journals without AIS; orange: outputs from the Phase I, blue: the other outputs of the team.

**Quality of outputs by intensity of citations:** number of outputs in the top decile (1\*) and in quartiles (1, 2, 3+4) determined from the list of outputs ordered by the number of citations (downloaded from the Web of Science at the beginning of evaluation) for each subject category, year, and type of output; n. a. – the data are not robust enough for relevant judgement; orange: outputs from the Phase I, blue: the other outputs of the team.

**Types of collaboration:** outputs created exclusively in a particular institute are marked by A1, outputs created within national cooperation by max. 5 organizations are marked by B, outputs created within international cooperation by max. 5 organizations are marked C, outputs created within large collaboration exceeding 5 organizations are marked D, outputs created within large international collaboration are marked E. It is distinguished by marking B1/B, C1/C and D1/D whether the output has/does not have a corresponding author from a particular team.

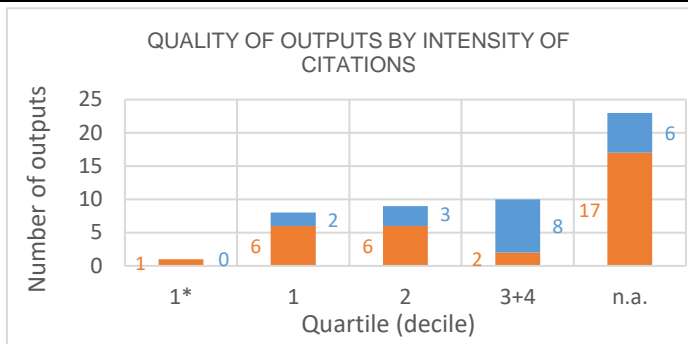
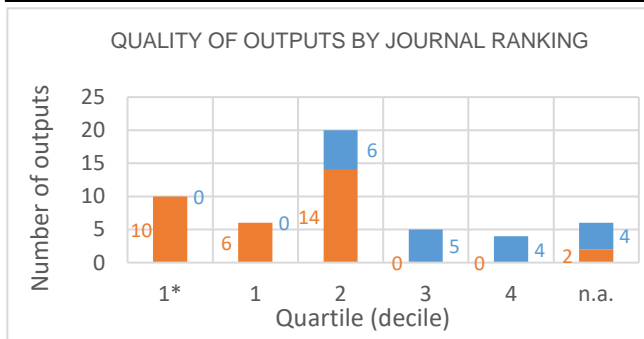
**Field structure of outputs:** number of outputs of the team in different subject categories (subfields); if the output is assigned to more than one field, the field where the publication performs best (assessed by Quality of outputs by journals ranking) is taken; the table shows up to 20 fields.

**Detailed explanation of the indicators is provided in the Methodology of evaluation, Annex 2 – Bibliometrics.**

# Evaluation of the Research and Professional Activities of the Institutes of the Czech Academy of Sciences for 2015–2019

## BIBLIOMETRIC PARAMETERS OF ALL OUTPUTS INCLUDING THOSE EVALUATED IN THE PHASE I.

**Institute:** Institute of Physiology of the CAS, v. v. i.  
**Team:** Laboratory of Cellular Neurophysiology  
**Head:** prof. MUDr. Ladislav Vyklický, DrSc.  
**Field:** Basic medicine  
**Total number of outputs:** 51      **Evaluated outputs:** 32



### TYPES OF COLLABORATION

Collaboration	Outputs (evaluated)	Outputs (not evaluated)
A1	2	1
B	7	4
B1	12	2
C	3	3
C1	2	1
D	3	4
D1	2	3
E		
n.a.	1	1
Without affiliation		
A1+B1+C1+D1	18	7
B+C+D+E	13	11

### FIELD STRUCTURE OF OUTPUTS

Field structure of outputs	Outputs (evaluated)	Outputs (not evaluated)
Neurosciences	13	5
Biochemistry Molecular Biology	8	7
Cell Biology	4	3
Biophysics	1	4
Pharmacology Pharmacy	5	
Chemistry Medicinal	4	
Multidisciplinary Sciences	2	2
Physiology	2	2
Clinical Neurology	2	1
Chemistry Multidisciplinary	1	1
Chemistry Physical		2
n.a.	1	1
Anesthesiology	1	
Endocrinology Metabolism		1
Engineering Biomedical		1
Chemistry Organic	1	
Medicine Research Experimental	1	
Physics Condensed Matter		1
Psychiatry	1	
Radiology Nuclear Medicine Medical		1

**Total number of outputs:** outputs of the team published during the evaluated period 2015-2019.

**Evaluated outputs:** selected outputs submitted by the team to the Phase I of evaluation.

**Outputs used for bibliometry:** subset of all outputs registered in the Web of Science; document type: article, review or proceedings paper.

**Quality of outputs by journal ranking:** number of outputs in top decile (1\*) and quartiles (1-4) by AIS of journals; n. a. - outputs in journals without AIS; orange: outputs from the Phase I, blue: the other outputs of the team.

**Quality of outputs by intensity of citations:** number of outputs in the top decile (1\*) and in quartiles (1, 2, 3+4) determined from the list of outputs ordered by the number of citations (downloaded from the Web of Science at the beginning of evaluation) for each subject category, year, and type of output; n. a. – the data are not robust enough for relevant judgement; orange: outputs from the Phase I, blue: the other outputs of the team.

**Types of collaboration:** outputs created exclusively in a particular institute are marked by A1, outputs created within national cooperation by max. 5 organizations are marked by B, outputs created within international cooperation by max. 5 organizations are marked C, outputs created within large collaboration exceeding 5 organizations are marked D, outputs created within large international collaboration are marked E. It is distinguished by marking B1/B, C1/C and D1/D whether the output has/does not have a corresponding author from a particular team.

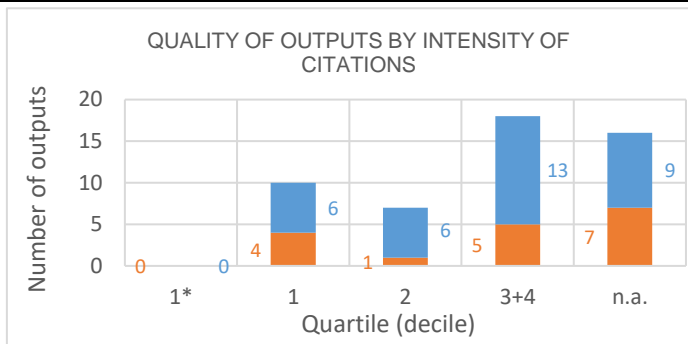
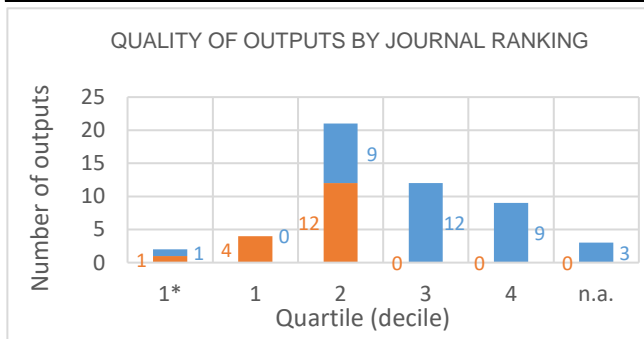
**Field structure of outputs:** number of outputs of the team in different subject categories (subfields); if the output is assigned to more than one field, the field where the publication performs best (assessed by Quality of outputs by journals ranking) is taken; the table shows up to 20 fields.

**Detailed explanation of the indicators is provided in the Methodology of evaluation, Annex 2 – Bibliometrics.**

# Evaluation of the Research and Professional Activities of the Institutes of the Czech Academy of Sciences for 2015–2019

## BIBLIOMETRIC PARAMETERS OF ALL OUTPUTS INCLUDING THOSE EVALUATED IN THE PHASE I.

**Institute:** Institute of Physiology of the CAS, v. v. i.  
**Team:** Laboratory of the Neurophysiology of Memory  
**Head:** prof. RNDr. Aleš Stuchlík, Ph.D.  
**Field:** Basic medicine  
**Total number of outputs:** 51      **Evaluated outputs:** 17



### TYPES OF COLLABORATION

Collaboration	Outputs (evaluated)	Outputs (not evaluated)
A1	1	4
B	5	5
B1	4	12
C	1	3
C1	3	3
D	2	5
D1	1	1
E		
n.a.		1
Without affiliation		
A1+B1+C1+D1	9	20
B+C+D+E	8	13

### FIELD STRUCTURE OF OUTPUTS

Field structure of outputs	Outputs (evaluated)	Outputs (not evaluated)
Neurosciences	14	18
Behavioral Sciences	5	14
Pharmacology Pharmacy	7	4
Psychiatry	3	3
Psychology Multidisciplinary	4	2
Physiology	1	4
Psychology	4	1
Geriatrics Gerontology	3	
Clinical Neurology	2	
Endocrinology Metabolism		2
Chemistry Medicinal	1	1
Psychology Biological		2
Psychology Experimental		2
Biochemistry Molecular Biology		1
Developmental Biology		1
Engineering Biomedical		1
Engineering Electrical Electronic		1
Multidisciplinary Sciences		1
n.a.		1
Plant Sciences		1

**Total number of outputs:** outputs of the team published during the evaluated period 2015-2019.

**Evaluated outputs:** selected outputs submitted by the team to the Phase I of evaluation.

**Outputs used for bibliometry:** subset of all outputs registered in the Web of Science; document type: article, review or proceedings paper.

**Quality of outputs by journal ranking:** number of outputs in top decile (1\*) and quartiles (1-4) by AIS of journals; n. a. - outputs in journals without AIS; orange: outputs from the Phase I, blue: the other outputs of the team.

**Quality of outputs by intensity of citations:** number of outputs in the top decile (1\*) and in quartiles (1, 2, 3+4) determined from the list of outputs ordered by the number of citations (downloaded from the Web of Science at the beginning of evaluation) for each subject category, year, and type of output; n. a. – the data are not robust enough for relevant judgement; orange: outputs from the Phase I, blue: the other outputs of the team.

**Types of collaboration:** outputs created exclusively in a particular institute are marked by A1, outputs created within national cooperation by max. 5 organizations are marked by B, outputs created within international cooperation by max. 5 organizations are marked C, outputs created within large collaboration exceeding 5 organizations are marked D, outputs created within large international collaboration are marked E. It is distinguished by marking B1/B, C1/C and D1/D whether the output has/does not have a corresponding author from a particular team.

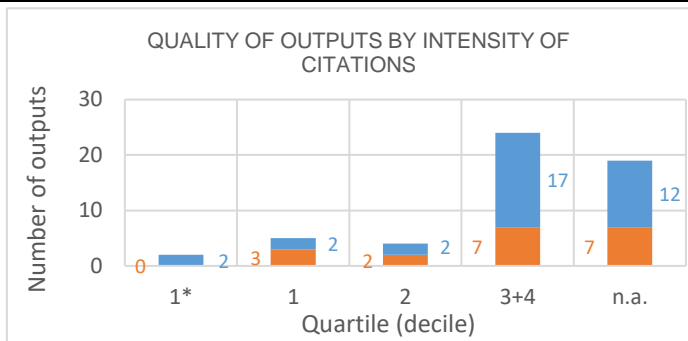
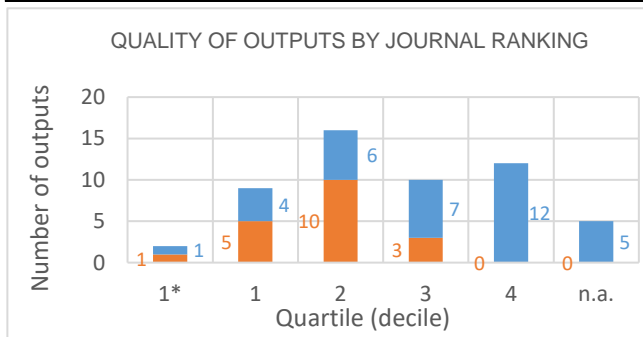
**Field structure of outputs:** number of outputs of the team in different subject categories (subfields); if the output is assigned to more than one field, the field where the publication performs best (assessed by Quality of outputs by journals ranking) is taken; the table shows up to 20 fields.

**Detailed explanation of the indicators is provided in the Methodology of evaluation, Annex 2 – Bibliometrics.**

# Evaluation of the Research and Professional Activities of the Institutes of the Czech Academy of Sciences for 2015–2019

## BIBLIOMETRIC PARAMETERS OF ALL OUTPUTS INCLUDING THOSE EVALUATED IN THE PHASE I.

**Institute:** Institute of Physiology of the CAS, v. v. i.  
**Team:** Laboratory of Developmental Epileptology  
**Head:** doc. PharmDr. Hana Kubová, DrSc.  
**Field:** Basic medicine  
**Total number of outputs:** 54      **Evaluated outputs:** 19



### TYPES OF COLLABORATION

Collaboration	Outputs (evaluated)	Outputs (not evaluated)
A1	6	5
B	2	9
B1	2	4
C	2	6
C1	4	2
D		5
D1	3	1
E		
n.a.		3
Without affiliation		
A1+B1+C1+D1	15	12
B+C+D+E	4	20

### FIELD STRUCTURE OF OUTPUTS

Field structure of outputs	Outputs (evaluated)	Outputs (not evaluated)
Neurosciences	15	11
Clinical Neurology	5	9
Pharmacology Pharmacy	3	4
Physiology		4
Behavioral Sciences		3
n.a.		3
Psychiatry	1	2
Anatomy Morphology	1	1
Computer Science Information Systems		2
Computer Science Interdisciplinary Areas		2
Endocrinology Metabolism		2
Engineering Biomedical		2
Chemistry Multidisciplinary		2
Biochemistry Molecular Biology		1
Computer Science Artificial Intelligence		1
Computer Science Cybernetics		1
Immunology	1	
Mathematics Applied		1
Physics Mathematical		1
Psychology Biological		1

**Total number of outputs:** outputs of the team published during the evaluated period 2015-2019.

**Evaluated outputs:** selected outputs submitted by the team to the Phase I of evaluation.

**Outputs used for bibliometry:** subset of all outputs registered in the Web of Science; document type: article, review or proceedings paper.

**Quality of outputs by journal ranking:** number of outputs in top decile (1\*) and quartiles (1-4) by AIS of journals; n. a. - outputs in journals without AIS; orange: outputs from the Phase I, blue: the other outputs of the team.

**Quality of outputs by intensity of citations:** number of outputs in the top decile (1\*) and in quartiles (1, 2, 3+4) determined from the list of outputs ordered by the number of citations (downloaded from the Web of Science at the beginning of evaluation) for each subject category, year, and type of output; n. a. – the data are not robust enough for relevant judgement; orange: outputs from the Phase I, blue: the other outputs of the team.

**Types of collaboration:** outputs created exclusively in a particular institute are marked by A1, outputs created within national cooperation by max. 5 organizations are marked by B, outputs created within international cooperation by max. 5 organizations are marked C, outputs created within large collaboration exceeding 5 organizations are marked D, outputs created within large international collaboration are marked E. It is distinguished by marking B1/B, C1/C and D1/D whether the output has/does not have a corresponding author from a particular team.

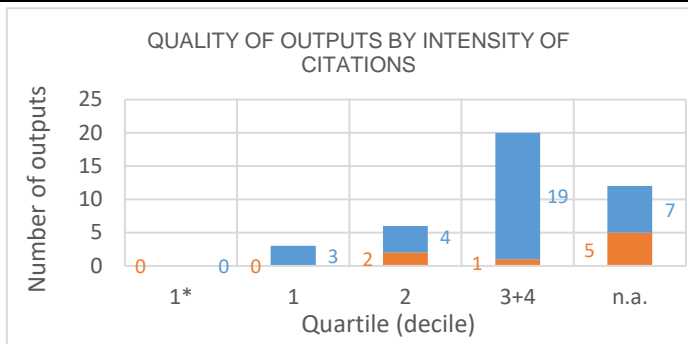
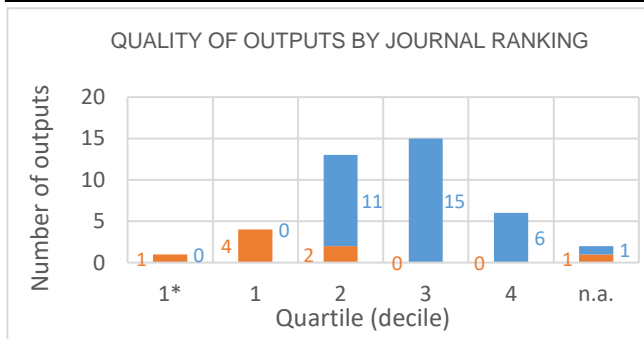
**Field structure of outputs:** number of outputs of the team in different subject categories (subfields); if the output is assigned to more than one field, the field where the publication performs best (assessed by Quality of outputs by journals ranking) is taken; the table shows up to 20 fields.

**Detailed explanation of the indicators is provided in the Methodology of evaluation, Annex 2 – Bibliometrics.**

# Evaluation of the Research and Professional Activities of the Institutes of the Czech Academy of Sciences for 2015–2019

## BIBLIOMETRIC PARAMETERS OF ALL OUTPUTS INCLUDING THOSE EVALUATED IN THE PHASE I.

**Institute:** Institute of Physiology of the CAS, v. v. i.  
**Team:** Laboratory of Computational Neuroscience  
**Head:** Mgr. Lubomír Košťál, Ph.D.  
**Field:** Biochemistry and molecular cell biology, biophysics, virology, ...  
**Total number of outputs:** 41      **Evaluated outputs:** 8



### TYPES OF COLLABORATION

Collaboration	Outputs (evaluated)	Outputs (not evaluated)
A1	2	7
B		3
B1		
C		8
C1	5	9
D		3
D1		3
E		
n.a.	1	
Without affiliation		
A1+B1+C1+D1	7	19
B+C+D+E		14

### FIELD STRUCTURE OF OUTPUTS

Field structure of outputs	Outputs (evaluated)	Outputs (not evaluated)
Mathematical Computational Biology	1	9
Neurosciences	1	9
Biology	1	7
Physics Mathematical	2	5
Multidisciplinary Sciences	1	3
Cell Biology		3
Computer Science Artificial Intelligence	1	2
Computer Science Cybernetics		3
Mathematics Applied	1	2
Mathematics Interdisciplinary Applications	1	2
Physics Fluids Plasmas	1	2
Statistics Probability		3
Biochemical Research Methods	1	
Biophysics		1
Clinical Neurology		1
Engineering Biomedical		1
n.a.	1	
Pharmacology Pharmacy		1
Physics Multidisciplinary		1
Psychology Mathematical	1	

**Total number of outputs:** outputs of the team published during the evaluated period 2015-2019.

**Evaluated outputs:** selected outputs submitted by the team to the Phase I of evaluation.

**Outputs used for bibliometry:** subset of all outputs registered in the Web of Science; document type: article, review or proceedings paper.

**Quality of outputs by journal ranking:** number of outputs in top decile (1\*) and quartiles (1-4) by AIS of journals; n. a. - outputs in journals without AIS; orange: outputs from the Phase I, blue: the other outputs of the team.

**Quality of outputs by intensity of citations:** number of outputs in the top decile (1\*) and in quartiles (1, 2, 3+4) determined from the list of outputs ordered by the number of citations (downloaded from the Web of Science at the beginning of evaluation) for each subject category, year, and type of output; n. a. – the data are not robust enough for relevant judgement; orange: outputs from the Phase I, blue: the other outputs of the team.

**Types of collaboration:** outputs created exclusively in a particular institute are marked by A1, outputs created within national cooperation by max. 5 organizations are marked by B, outputs created within international cooperation by max. 5 organizations are marked C, outputs created within large collaboration exceeding 5 organizations are marked D, outputs created within large international collaboration are marked E. It is distinguished by marking B1/B, C1/C and D1/D whether the output has/does not have a corresponding author from a particular team.

**Field structure of outputs:** number of outputs of the team in different subject categories (subfields); if the output is assigned to more than one field, the field where the publication performs best (assessed by Quality of outputs by journals ranking) is taken; the table shows up to 20 fields.

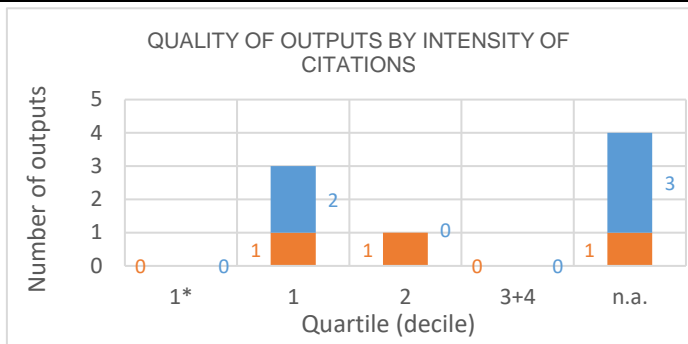
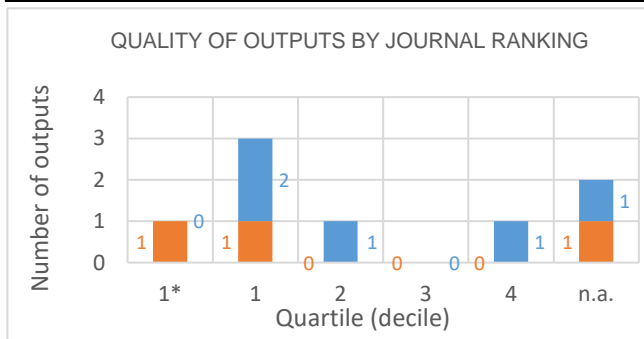
**Detailed explanation of the indicators is provided in the Methodology of evaluation, Annex 2 – Bibliometrics.**



# Evaluation of the Research and Professional Activities of the Institutes of the Czech Academy of Sciences for 2015–2019

## BIBLIOMETRIC PARAMETERS OF ALL OUTPUTS INCLUDING THOSE EVALUATED IN THE PHASE I.

**Institute:** Institute of Physiology of the CAS, v. v. i.  
**Team:** Laboratory of Molecular Neurobiology  
**Head:** Mgr. Martin Balašík, Ph.D.  
**Field:** Biochemistry and molecular cell biology, biophysics, virology, ...  
**Total number of outputs:** 8      **Evaluated outputs:** 3



### TYPES OF COLLABORATION

Collaboration	Outputs (evaluated)	Outputs (not evaluated)
A1		1
B		1
B1		1
C		
C1		1
D	2	1
D1		
E		
n.a.	1	
Without affiliation		
A1+B1+C1+D1		3
B+C+D+E	2	2

### FIELD STRUCTURE OF OUTPUTS

Field structure of outputs	Outputs (evaluated)	Outputs (not evaluated)
Biochemistry Molecular Biology	1	2
Cell Biology	2	1
Marine Freshwater Biology		1
Medicine Research Experimental		1
n.a.	1	
Physiology		1
Plant Sciences		1

**Total number of outputs:** outputs of the team published during the evaluated period 2015-2019.

**Evaluated outputs:** selected outputs submitted by the team to the Phase I of evaluation.

**Outputs used for bibliometry:** subset of all outputs registered in the Web of Science; document type: article, review or proceedings paper.

**Quality of outputs by journal ranking:** number of outputs in top decile (1\*) and quartiles (1-4) by AIS of journals; n. a. - outputs in journals without AIS; orange: outputs from the Phase I, blue: the other outputs of the team.

**Quality of outputs by intensity of citations:** number of outputs in the top decile (1\*) and in quartiles (1, 2, 3+4) determined from the list of outputs ordered by the number of citations (downloaded from the Web of Science at the beginning of evaluation) for each subject category, year, and type of output; n. a. – the data are not robust enough for relevant judgement; orange: outputs from the Phase I, blue: the other outputs of the team.

**Types of collaboration:** outputs created exclusively in a particular institute are marked by A1, outputs created within national cooperation by max. 5 organizations are marked by B, outputs created within international cooperation by max. 5 organizations are marked C, outputs created within large collaboration exceeding 5 organizations are marked D, outputs created within large international collaboration are marked E. It is distinguished by marking B1/B, C1/C and D1/D whether the output has/does not have a corresponding author from a particular team.

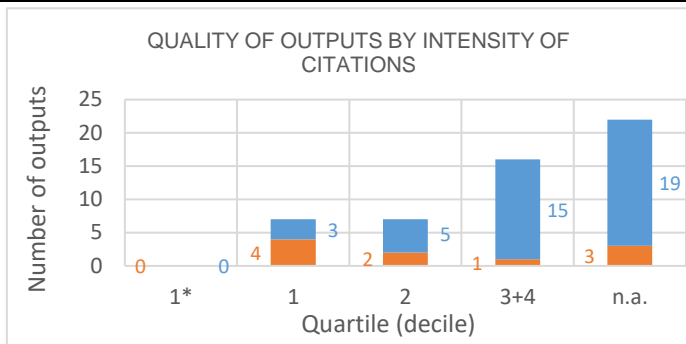
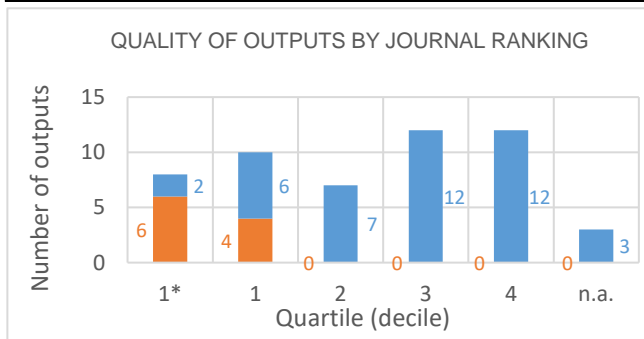
**Field structure of outputs:** number of outputs of the team in different subject categories (subfields); if the output is assigned to more than one field, the field where the publication performs best (assessed by Quality of outputs by journals ranking) is taken; the table shows up to 20 fields.

**Detailed explanation of the indicators is provided in the Methodology of evaluation, Annex 2 – Bibliometrics.**

# Evaluation of the Research and Professional Activities of the Institutes of the Czech Academy of Sciences for 2015–2019

## BIBLIOMETRIC PARAMETERS OF ALL OUTPUTS INCLUDING THOSE EVALUATED IN THE PHASE I.

**Institute:** Institute of Physiology of the CAS, v. v. i.  
**Team:** Laboratory of Genetics of Model Diseases  
**Head:** Ing. Michal Pravenec, DrSc.  
**Field:** Biochemistry and molecular cell biology, biophysics, virology, ...  
**Total number of outputs:** 52      **Evaluated outputs:** 10



### TYPES OF COLLABORATION

Collaboration	Outputs (evaluated)	Outputs (not evaluated)
A1		
B		12
B1		9
C	4	8
C1	1	4
D	3	7
D1	2	
E		
n.a.		2
Without affiliation		
A1+B1+C1+D1	3	13
B+C+D+E	7	27

### FIELD STRUCTURE OF OUTPUTS

Field structure of outputs	Outputs (evaluated)	Outputs (not evaluated)
Physiology		15
Peripheral Vascular Disease	5	4
Multidisciplinary Sciences	1	7
Cell Biology		4
Genetics Heredity		4
Biochemistry Molecular Biology		3
Biotechnology Applied Microbiology		3
Cardiac Cardiovascular Systems	2	1
Endocrinology Metabolism	1	2
Biochemical Research Methods		2
Medicine Research Experimental		2
n.a.		2
Urology Nephrology	1	1
Agriculture Dairy Animal Science		1
Developmental Biology		1
Mathematical Computational Biology		1
Pathology		1
Reproductive Biology		1
Substance Abuse		1
Veterinary Sciences		1

**Total number of outputs:** outputs of the team published during the evaluated period 2015-2019.

**Evaluated outputs:** selected outputs submitted by the team to the Phase I of evaluation.

**Outputs used for bibliometry:** subset of all outputs registered in the Web of Science; document type: article, review or proceedings paper.

**Quality of outputs by journal ranking:** number of outputs in top decile (1\*) and quartiles (1-4) by AIS of journals; n. a. - outputs in journals without AIS; orange: outputs from the Phase I, blue: the other outputs of the team.

**Quality of outputs by intensity of citations:** number of outputs in the top decile (1\*) and in quartiles (1, 2, 3+4) determined from the list of outputs ordered by the number of citations (downloaded from the Web of Science at the beginning of evaluation) for each subject category, year, and type of output; n. a. – the data are not robust enough for relevant judgement; orange: outputs from the Phase I, blue: the other outputs of the team.

**Types of collaboration:** outputs created exclusively in a particular institute are marked by A1, outputs created within national cooperation by max. 5 organizations are marked by B, outputs created within international cooperation by max. 5 organizations are marked C, outputs created within large collaboration exceeding 5 organizations are marked D, outputs created within large international collaboration are marked E. It is distinguished by marking B1/B, C1/C and D1/D whether the output has/does not have a corresponding author from a particular team.

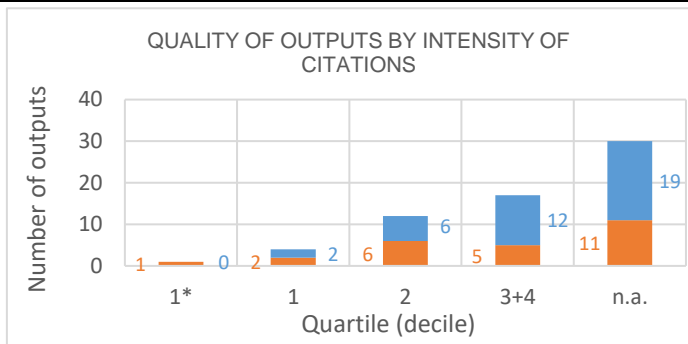
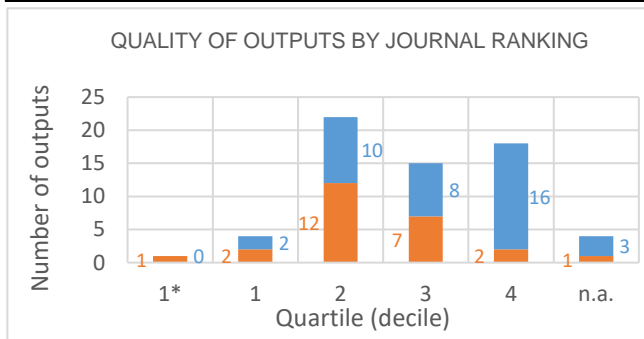
**Field structure of outputs:** number of outputs of the team in different subject categories (subfields); if the output is assigned to more than one field, the field where the publication performs best (assessed by Quality of outputs by journals ranking) is taken; the table shows up to 20 fields.

**Detailed explanation of the indicators is provided in the Methodology of evaluation, Annex 2 – Bibliometrics.**

# Evaluation of the Research and Professional Activities of the Institutes of the Czech Academy of Sciences for 2015–2019

## BIBLIOMETRIC PARAMETERS OF ALL OUTPUTS INCLUDING THOSE EVALUATED IN THE PHASE I.

**Institute:** Institute of Physiology of the CAS, v. v. i.  
**Team:** Laboratory of Biomathematics  
**Head:** RNDr. Jiří Janáček, Ph.D.  
**Field:** Basic medicine  
**Total number of outputs:** 64      **Evaluated outputs:** 25



### TYPES OF COLLABORATION

Collaboration	Outputs (evaluated)	Outputs (not evaluated)
A1	2	4
B	6	10
B1	5	8
C	3	6
C1	4	6
D	3	1
D1	1	3
E		
n.a.	1	1
Without affiliation		
A1+B1+C1+D1	12	21
B+C+D+E	12	17

### FIELD STRUCTURE OF OUTPUTS

Field structure of outputs	Outputs (evaluated)	Outputs (not evaluated)
Materials Science Multidisciplinary	4	5
Cell Biology	4	4
Multidisciplinary Sciences	6	2
Microscopy	2	4
Nanoscience Nanotechnology	1	5
Pharmacology Pharmacy	2	4
Physiology	1	5
Anatomy Morphology	1	3
Biophysics	4	
Imaging Science Photographic Techn		4
Biochemistry Molecular Biology	3	
Mathematics Applied		3
Mechanics		3
Biochemical Research Methods	2	
Biology		2
Forestry		2
Chemistry Multidisciplinary	2	
Chemistry Physical	2	
Materials Science Textiles		2
n.a.	1	1

**Total number of outputs:** outputs of the team published during the evaluated period 2015-2019.

**Evaluated outputs:** selected outputs submitted by the team to the Phase I of evaluation.

**Outputs used for bibliometry:** subset of all outputs registered in the Web of Science; document type: article, review or proceedings paper.

**Quality of outputs by journal ranking:** number of outputs in top decile (1\*) and quartiles (1-4) by AIS of journals; n. a. - outputs in journals without AIS; orange: outputs from the Phase I, blue: the other outputs of the team.

**Quality of outputs by intensity of citations:** number of outputs in the top decile (1\*) and in quartiles (1, 2, 3+4) determined from the list of outputs ordered by the number of citations (downloaded from the Web of Science at the beginning of evaluation) for each subject category, year, and type of output; n. a. – the data are not robust enough for relevant judgement; orange: outputs from the Phase I, blue: the other outputs of the team.

**Types of collaboration:** outputs created exclusively in a particular institute are marked by A1, outputs created within national cooperation by max. 5 organizations are marked by B, outputs created within international cooperation by max. 5 organizations are marked C, outputs created within large collaboration exceeding 5 organizations are marked D, outputs created within large international collaboration are marked E. It is distinguished by marking B1/B, C1/C and D1/D whether the output has/does not have a corresponding author from a particular team.

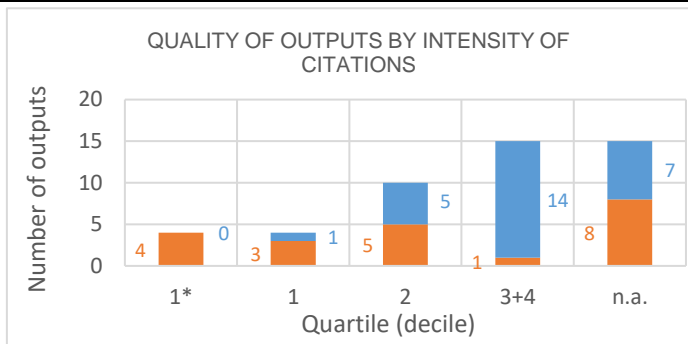
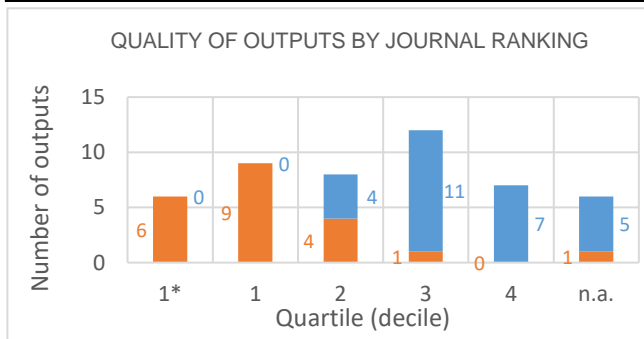
**Field structure of outputs:** number of outputs of the team in different subject categories (subfields); if the output is assigned to more than one field, the field where the publication performs best (assessed by Quality of outputs by journals ranking) is taken; the table shows up to 20 fields.

**Detailed explanation of the indicators is provided in the Methodology of evaluation, Annex 2 – Bibliometrics.**

# Evaluation of the Research and Professional Activities of the Institutes of the Czech Academy of Sciences for 2015–2019

## BIBLIOMETRIC PARAMETERS OF ALL OUTPUTS INCLUDING THOSE EVALUATED IN THE PHASE I.

**Institute:** Institute of Physiology of the CAS, v. v. i.  
**Team:** Laboratory of Mitochondrial Physiology  
**Head:** RNDr. Petr Ježek, DrSc.  
**Field:** Biochemistry and molecular cell biology, biophysics, virology, ...  
**Total number of outputs:** 48      **Evaluated outputs:** 21



### TYPES OF COLLABORATION

Collaboration	Outputs (evaluated)	Outputs (not evaluated)
A1		4
B		2
B1		5
C		1
C1		3
D		3
D1		1
E		
n.a.		1
Without affiliation		1
A1+B1+C1+D1	13	20
B+C+D+E	6	5

### FIELD STRUCTURE OF OUTPUTS

Field structure of outputs	Outputs (evaluated)	Outputs (not evaluated)
Biochemistry Molecular Biology	13	7
Cell Biology	5	7
Biophysics	5	3
Endocrinology Metabolism	5	2
Physiology		4
Chemistry Multidisciplinary	1	2
Materials Science Multidisciplinary	2	1
Nanoscience Nanotechnology	2	1
Cardiac Cardiovascular Systems	2	
Chemistry Inorganic Nuclear		2
Chemistry Organic		2
Medicine Research Experimental		2
n.a.	1	1
Neurosciences		2
Oncology		2
Peripheral Vascular Disease	2	
Physics Applied	1	1
Biochemical Research Methods		1
Biology	1	
Clinical Neurology		1

**Total number of outputs:** outputs of the team published during the evaluated period 2015-2019.

**Evaluated outputs:** selected outputs submitted by the team to the Phase I of evaluation.

**Outputs used for bibliometry:** subset of all outputs registered in the Web of Science; document type: article, review or proceedings paper.

**Quality of outputs by journal ranking:** number of outputs in top decile (1\*) and quartiles (1-4) by AIS of journals; n. a. - outputs in journals without AIS; orange: outputs from the Phase I, blue: the other outputs of the team.

**Quality of outputs by intensity of citations:** number of outputs in the top decile (1\*) and in quartiles (1, 2, 3+4) determined from the list of outputs ordered by the number of citations (downloaded from the Web of Science at the beginning of evaluation) for each subject category, year, and type of output; n. a. – the data are not robust enough for relevant judgement; orange: outputs from the Phase I, blue: the other outputs of the team.

**Types of collaboration:** outputs created exclusively in a particular institute are marked by A1, outputs created within national cooperation by max. 5 organizations are marked by B, outputs created within international cooperation by max. 5 organizations are marked C, outputs created within large collaboration exceeding 5 organizations are marked D, outputs created within large international collaboration are marked E. It is distinguished by marking B1/B, C1/C and D1/D whether the output has/does not have a corresponding author from a particular team.

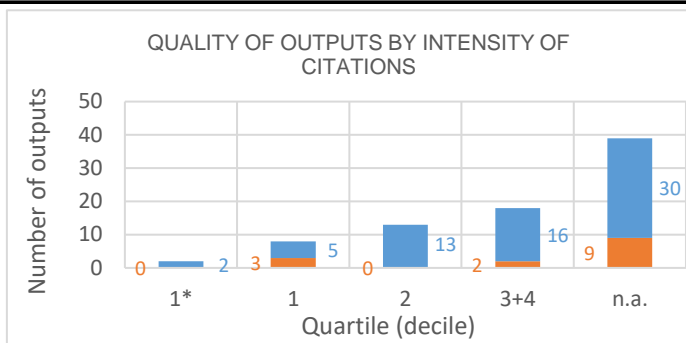
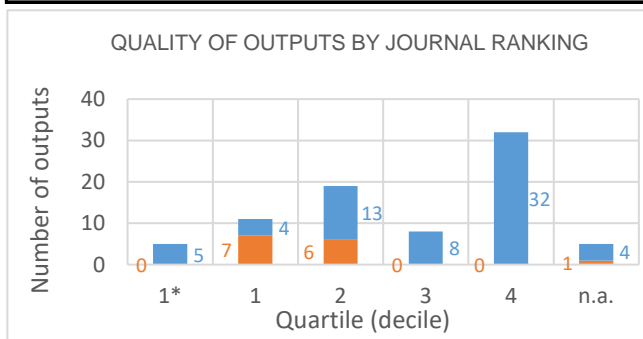
**Field structure of outputs:** number of outputs of the team in different subject categories (subfields); if the output is assigned to more than one field, the field where the publication performs best (assessed by Quality of outputs by journals ranking) is taken; the table shows up to 20 fields.

**Detailed explanation of the indicators is provided in the Methodology of evaluation, Annex 2 – Bibliometrics.**

# Evaluation of the Research and Professional Activities of the Institutes of the Czech Academy of Sciences for 2015–2019

## BIBLIOMETRIC PARAMETERS OF ALL OUTPUTS INCLUDING THOSE EVALUATED IN THE PHASE I.

**Institute:** Institute of Physiology of the CAS, v. v. i.  
**Team:** Laboratory of Developmental Cardiology  
**Head:** prof. RNDr. František Kolář, CSc.  
**Field:** Basic medicine  
**Total number of outputs:** 80      **Evaluated outputs:** 14



### TYPES OF COLLABORATION

Collaboration	Outputs (evaluated)	Outputs (not evaluated)
A1		4
B		17
B1	3	10
C	1	17
C1	3	1
D	3	15
D1	3	1
E		
n.a.	1	
Without affiliation		1
A1+B1+C1+D1	9	16
B+C+D+E	4	49

### FIELD STRUCTURE OF OUTPUTS

Field structure of outputs	Outputs (evaluated)	Outputs (not evaluated)
Physiology	5	26
Cell Biology	1	14
Pharmacology Pharmacy	1	9
Biochemistry Molecular Biology		7
Cardiac Cardiovascular Systems	2	5
Peripheral Vascular Disease	2	4
Anatomy Morphology		5
Biology		4
Developmental Biology	1	3
Endocrinology Metabolism	1	3
Genetics Heredity		4
Medicine Research Experimental	3	1
Multidisciplinary Sciences	1	2
Urology Nephrology		3
Microscopy		2
Nutrition Dietetics		2
Sport Sciences	1	1
Biophysics		1
Environmental Sciences		1
Materials Science Multidisciplinary		1

**Total number of outputs:** outputs of the team published during the evaluated period 2015-2019.

**Evaluated outputs:** selected outputs submitted by the team to the Phase I of evaluation.

**Outputs used for bibliometry:** subset of all outputs registered in the Web of Science; document type: article, review or proceedings paper.

**Quality of outputs by journal ranking:** number of outputs in top decile (1\*) and quartiles (1-4) by AIS of journals; n. a. - outputs in journals without AIS; orange: outputs from the Phase I, blue: the other outputs of the team.

**Quality of outputs by intensity of citations:** number of outputs in the top decile (1\*) and in quartiles (1, 2, 3+4) determined from the list of outputs ordered by the number of citations (downloaded from the Web of Science at the beginning of evaluation) for each subject category, year, and type of output; n. a. – the data are not robust enough for relevant judgement; orange: outputs from the Phase I, blue: the other outputs of the team.

**Types of collaboration:** outputs created exclusively in a particular institute are marked by A1, outputs created within national cooperation by max. 5 organizations are marked by B, outputs created within international cooperation by max. 5 organizations are marked C, outputs created within large collaboration exceeding 5 organizations are marked D, outputs created within large international collaboration are marked E. It is distinguished by marking B1/B, C1/C and D1/D whether the output has/does not have a corresponding author from a particular team.

**Field structure of outputs:** number of outputs of the team in different subject categories (subfields); if the output is assigned to more than one field, the field where the publication performs best (assessed by Quality of outputs by journals ranking) is taken; the table shows up to 20 fields.

**Detailed explanation of the indicators is provided in the Methodology of evaluation, Annex 2 – Bibliometrics.**